



**One Software
Controls
All Signs**

AlphaNET™ VERSION 2

AlphaNET messaging software improves every major aspect of electronic messaging, from sending and creating, to the editing of text, animations and graphics. AlphaNET software brings together all the essential tools for realizing the full potential of Alpha displays, with unique features that include: high-level capabilities for group messaging (via serial, modem, wireless or LAN network), an animation library and support for .GIF and .BMP files, calendar/date message scheduling, Jasc® Paint Shop Pro, Animation Shop Pro, Site Manager, Message Emulator, and a useful and intuitive interface.

Create multiple messages to communicate special events, incentives, news, and congratulations that contain text with logos, graphics and animations. For added versatility and message enhancement, included is a unique counter feature to display the minutes, hours or days for an event or occasion.

System Requirements

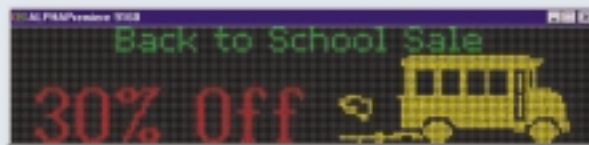
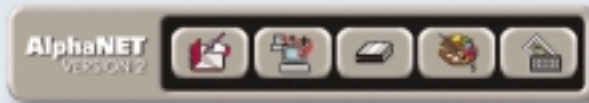
- Windows® 95/98/2000, or Windows® NT Workstation
- Use processor requirements for selected operating systems
- 16MB of RAM
- 50 MB hard disk space
- CD ROM
- RS232 (Serial Port) or LAN access

Software Kit Includes

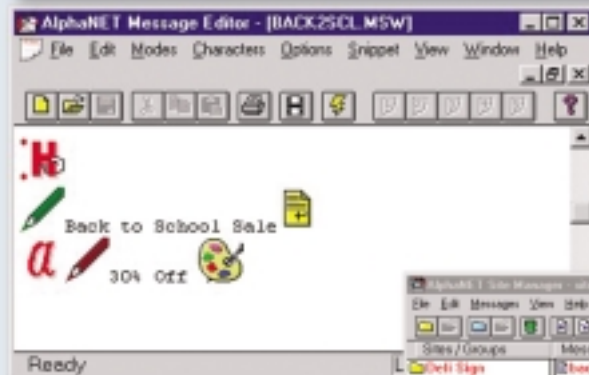
- Software CD
- Easy to follow installation guide
- Online help
- AlphaNET Version 2
- Paint Shop Pro Version 5
- Animation Shop Version 1

Features

- Schedule messages to display at different times, locations and days
- "Message Emulator" allows you to view messages before they are actually displayed
- Allows user to have a network of displays via serial addressing, modems, wireless, and Local Area Network (LAN)
- Enables use of graphics and animations in most popular formats
- Contains a counter feature to display minutes, hours or days to an event
- Supports international characters
- Ability to send messages to individual or groups of signs
- Includes ActiveX control for real-time applications
- Provides support for Alpha plug-ins
- Supports a wide variety of scanners

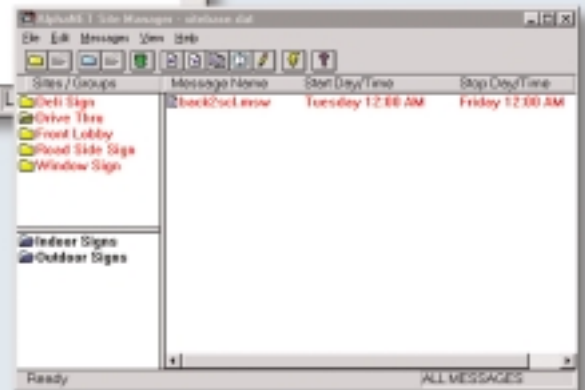


The Emulator is used to preview messages, text, graphics and animations that you create.

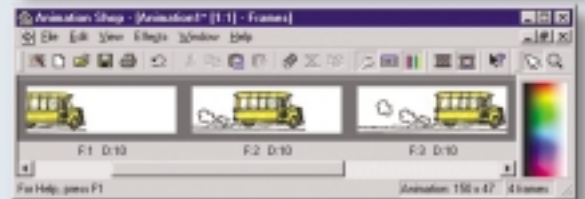


The Message Editor is used to create messages for displays. Text graphics and animations can be used in messages.

The Site Manager is used to set up "devices" (methods of communicating with displays), "sites" (locations of displays), and "groups" (a collection of one or more sites).

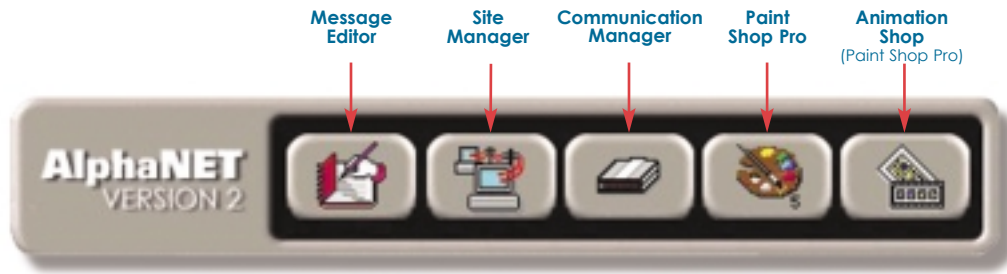


The Animation Manager features high-quality easy-to-use creative effects, features, and optimization options. Easily create buttons, banners, and other animations.



Start Up Bar Overview

AlphaNET™ VERSION 2



Message Editor – Used to create messages.

- **Format messages:**
 - Presentation style
 - Text size and color
 - Line position
 - Presentation speed
- **Embed in message:**
 - Time and date
 - Temperature
 - Animations
 - Graphics
- **Simulate message**

Site Manager – Used to schedule and send messages.

- **Define sign network options:**
 - Sign address
 - Memory configuration
 - Groupings
 - Time zone adjusts
 - Level of Error checking
- **Send messages to signs**
- **Define message Schedule** (time and date)
- **Define Counter functionality**

Communication Manager – Manages communications to sign.

- **Maintains transmission log**
- **Interfaces to sign via**
 - Modem
 - PC Comport
 - Wireless
 - Local Area Network (Ethernet)

Paint Shop Pro – Used to create graphic images.

- Draw or import images
- Scan photos and images
- Color and size images

Animation Shop – Used to create animations.

- Create or import animations (GIF format)
- Preview animations
- Color and size animations

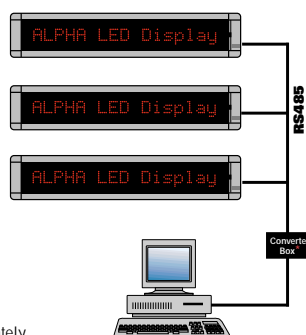
*Temperature options available on AlphaEclipse outdoor LED models only

One Software Controls All Sign Networks

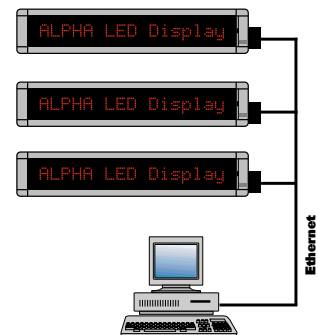
Single Sign Network



Multiple Sign Network



LAN Network



*The RS485 converter box and Ethernet Adapter components are all sold separately.

Features indicated are not available in all ALPHA® products. Features and functions included with this product may vary depending upon version of product purchased and contained herein. © Copyright 2001 Adaptive Micro Systems, Inc. All rights reserved. ALPHA®, Big Dot® and AlphaNET™ Messaging Software™ are all registered trademarks of Adaptive Micro Systems, Inc. Other product names appearing are the property of their respective owners. Windows, Windows 95/98/2000, and Windows NT are registered trademarks of Microsoft Corporation. No affiliation with same is expressed or implied herewith.

Printed in the U.S.A. The appearance of this product is a trade dress of Adaptive. Issued 11/01.

ADAPTIVE
Adaptive Micro Systems Inc